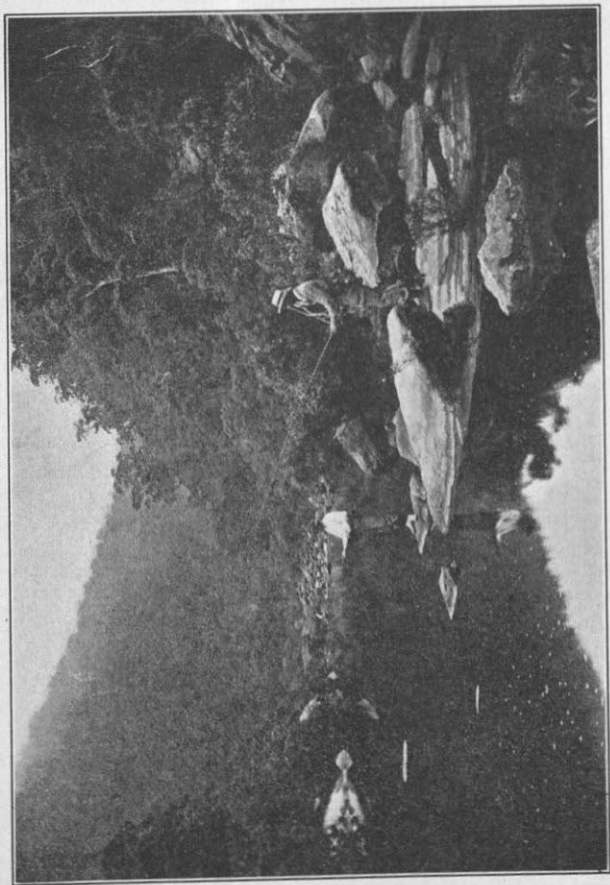


## INDEX OF SELECTIONS.

The numbers in parentheses refer to pages in Wentworth's edition of *The Sketch Book*, published by Allyn and Bacon; the other figures refer to pages of this book.

- The Author's Account of Himself:** 12 (10); 61 (10); 71 (11); 163 (9).
- The Voyage:** 10 (18); 13 (15); 19 (18); 67 (13); 107 (13); 113 (14); 120 (16); 151 (14); 168 (18).
- Roscoe:** 10 (20); 16 (24); 22 (21); 28 (21); 40 (25); 61 (25); 64 (22); 133 (20).
- The Wife:** 17 (30); 40 (32).
- Rip Van Winkle:** 9 (43); 11 (38); 31 (42); 42 (38); 46 (46); 52 (38); 65 (45); 149 (40).
- English Writers on America:** 11 (67); 42 (59); 44 (63); 44 (63); 46 (58); 60 (60); 72 (66); 77 (58); 100 (66); 100 (58); 102 (60); 103 (66).
- Rural Life in England:** 38 (73); 39 (71); 49 (74); 56 (71); 74 (74); 75 (68); 102 (73); 114 (68); 144 (70); 148 (69); 159 (70).
- The Broken Heart:** 41 (79); 41 (79); 100 (78); 121 (78).
- The Art of Bookmaking:** 43 (87); 62 (89); 103 (86); 107 (86); 122 (87).
- A Royal Poet:** 55 (103); 102 (102).
- The Country Church:** 58 (112); 93 (109); 135 (107).
- The Widow and Her Son:** 6 (119); 7 (116); 39 (119); 43 (113); 44 (120); 121 (117).
- A Sunday in London:** 105 (121); 184 (121).
- The Boar's Head Tavern:** 11 (125); 87 (125).
- The Mutability of Literature:** 97 (146); 112 (147); 114 (138).
- Rural Funerals:** 12 (155); 26 (158); 33 (158); 46 (157); 82 (157); 94 (156); 103 (158).



THE ANGLERS.